

Versions

- 710/EL312V - Rapid automation for 3m booms with an opening time of 1,3s and an incorporated electronic programmer (710/EL313V with warning lights).
- 710/EL312 - Automation for 3m booms with an opening time of 2s and an incorporated electronic programmer (710/EL313 with warning lights).
- 710/EL412 - Automation for 4m booms with an opening time of 4s and an incorporated electronic programmer (710/EL413 with warning lights).
- 710/EL612 - Automation for 6m booms with an opening time of 10s and an incorporated electronic programmer (710/EL613 with warning lights).

Accessories

- 716/EL301A-401A-601A - 3-4-6 metre rigid booms in extruded aluminium.
- 716/EL301AP-401AP-601AP - 3-4-6 metre rigid booms in extruded aluminium complete with a 25 mm rubber buffer and reflective tape.
- 716/EL302ASP - 3 metre bars (1,5 m - 1,5 m) in extruded aluminium complete with a 25 mm rubber buffer and reflective tape.
- 716/ELFS1 - Support fork in extruded aluminium.
- 716/ELSM - Mobile support pole for 4-6 metre booms.
- 716/ELSA - Retractable aluminium mesh for 4-6 metre booms (2m strips).
- 716/ELLAMP - Warning light set (yellow lights).
- 716/ELSR - Reflective tape in strips of 250 x 50 mm.
- 950/XLPBS1 - Pressure switch for safety buffers.



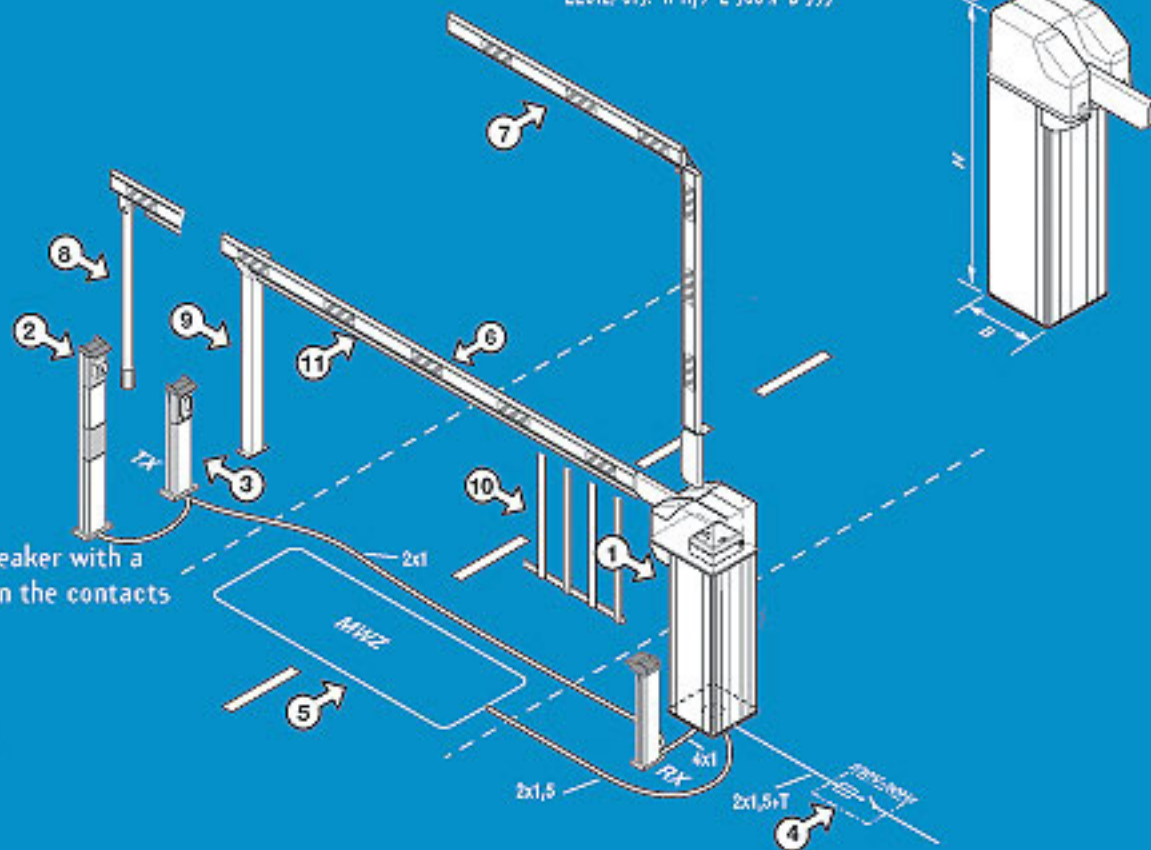
INSTALLATION EXAMPLE

OVERALL DIMENSIONS

EL312/313: H 1179 L 300 x B 300
 EL412/413: H 1179 L 300 x B 300
 EL612/613: H 1179 L 300 x B 355

Legend

- Barrier
- Selector switch
- Photocells
- Omnipolar circuit breaker with a min. of 3mm between the contacts
- Magnetic sensor
- Standard bar
- Articulated bar
- Mobile support fork
- Fixed support fork
- Retractable mesh
- Safety buffer



TECHNICAL SPECIFICATIONS

Model	Power supply Vac	Electrical input A	Power input W	Duty cycle %	Travel time s	Torque Nm	Shaft rotation speed revs/min	Capacitor µF	IP
EL312V/313V	230	2,7	600	70	1,3	65	16,6	20	X40
EL312/313	230	2,7	600	70	2	110	10	20	X40
EL412/413	230	2,7	600	70	4	200	5,5	20	X40
EL612/613	230	2,7	600	70	10	400	2	20	X40

By CARDIN ELETRONICA spa

Securitex Electronic Systems Engineering
 Block 9010 Tampines St 93 #04-145
 Singapore 528844.
 Tel: 65-67852171 Fax: 65-67863351
<http://www.securitex.com.sg>

