

SYRIS PRODUCT

SY210NT2-TSN / NT4-SSN 4 DOORS CONTROLLER



Number of cards: 9,999
Number of readers: 8 (4In, 4Out)
Door control: 4
Input Points: Normally 4, Expandable to 32
Relay output: Normally 2/4, Expandable to 32
Communication ports: RS485 X2
Keypad input: 16 key keypad
LCD display: 16 x 2 LCD with backlight
Beeper: beeper built-in, maximum 0.2W
Dimensions(mm): 135W x 175H x 45D

SY210NT2-OSN / NT4-FSN 4 DOORS CONTROLLER BOARD



Number of cards: 9,999
Number of readers: 8 (4In, 4Out)
Door control: 4
Input Points: Normally 4, Expandable to 32
Relay output: Normally 2/4, Expandable to 32
Communication ports: RS485 X2
Keypad input: 16key keypad
LCD display: 8 x 2 LCD with backlight
Beeper: beeper built-in
Dimensions(mm): 122W x 117H x 25D

SY600NT Multi-Doors Controller



Number of cards: 65,000
Number of Record: 65,000
Number of Reader: 8, expandable to 64
Wiegand input: 8 channel, expandable to 64
Ethernet port: Built-in, 10/100M, RJ-45
Door Control: 4, extendable to 32
Input point: normally 12, extendable to 128
Output point: Normally 6, extendable to 128
LCD display: 128 x 64 graphics with backlight
Dimension (mm): 204W x 291H x 80D

SY700NT Multi-Doors Controller



Number of cards: 65,000
Number of Record: 65,000
Number of Reader: 8, extendable to 64
Ethernet port: Built-in, 10/100M, RJ-45
Door Control: 4, extendable to 32
Input point: normally 12, extendable to 128
Output point: Normally 4, extendable to 128
LCD display: 128 x 64 graphics with backlight
Dimension (mm): 91W x 143H x 37D

SY120SA Single Door Controller



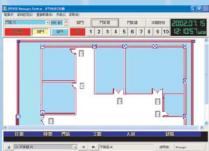
Number of cards: 2,000
Number of reader: 1 built-in, 1 extend
Input Points: 4 NV input
Output: 1 Relay, 1 voltage output
Keypad: 17 Key
Interface: RS485 or RS232 (optional)
Tamper switch: Built-in
Power: +8v ~ +15v dc
Dimension (mm): 81W x 118H x 28D

SYW95A / SYW95A-NET Management System Software



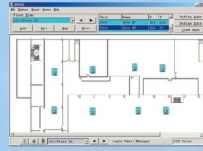
For SY210NT series controller
Multi-Language Application Software
Support Windows 95/98/Me/NT/2000/XP
SYW95A for single PC, SYW95A-NET for Network system
Link up to 99 controllers
User define language
Able for user to change the existing text fields shown on the screen

SYBASE Management System Software



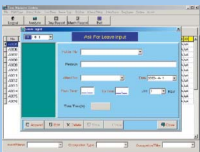
For SY120SA series controller
Multi-Language Application Software
Support Windows 95/98/Me/NT/2000/XP
Stand-alone or network system
Link up to 999 controllers
User define language
Able for user to change the existing text fields shown on the screen
Database support ACCESS/MS SQL/MY SQL ... etc

SYSOFT Management System Software



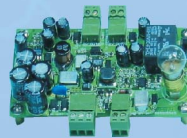
For SY600NT / SY700NT series controller
Multi-Language Application Software
Support Windows 95/98/Me/NT/2000/XP
Network system
Link up to 9,999 controllers
User define language
Able for user to change the existing text fields shown on the screen
Database support ACCESS/MS SQL/MY SQL ... etc

SYTAM Time Attendant Management System Software



Multi-Language Application Software
Support Windows 95/98/Me/NT/2000/XP
Stand-alone or Network system
Link to SYW95A / SYW95A-NET / SYBASE / SYSOFT
User define language
Able for user to change the existing text fields shown on the screen
Database support ACCESS/MS SQL/MY SQL ... etc

MDPOW-1 Power Supply Module



Input: AC 15~18V, 50/60 hz, DC 18~25V.
Output: 2 channel DC 12V, Full Load: 2A, Peak Load: 3A.
Backup Battery: DC 12V, 1.2 Ah~7Ah.
Battery Charging: Constant current, constant Voltage
Protection: Poly Switch for Input and Output

MDNET-1 Ethernet to RS232/RS485 Convert



Baud rate: 4,800~115,200 bps
Protocols: TCP, IP Ver. UDP, ICMP, ARP
Support 10/100Mbs operation
Web Base configure
Dimensions(mm): 107W x 138H x 30D

SYRDU5 Desktop Proximity Reader



Interface: RS232 / USB
Baud rate: 4,800~115,200 bps
ID: 1~8 or 01~99
Card read time: 0.1sec(typical)
Read range: 5cm~15cm
Beeper: Built-in
Power: USB or +8V ~ +15V dc
Dimensions(mm): 107W x 138H x 30D

MD120EXT-1S DI/DO Module



Extend Module for SY120SA
Input: 2 NV input
Output: 1 relay output
Power: +8v ~ +15v dc
Dimension (mm): 48W x 85H x 18D

MDKEY Software Keypro



The user key Bundle with SYRIS software.
Support SY-TAM series
Support SY-SOFT, SYBASE, SY-NET version.
Convenient USB port interface
Dimension (mm): 67W x 92H x 20D