

SECURITEX MONSTER WHEEL CHOCK WC-M1550IG-O-NR is designed for easy deployment of the Wheel Chock where ever needed. Its anti-slip and anti-skid designed prevent vehicle from moving laterally when park on flat ground. This Wheel Chock is very useful for use on Car. Truck. Buggy. Firefighting Foam Monitor. Trailer. Caravan and even chocking the huge diameter pipes, drums and industrial trolley. As the wheel chock can be supply with Single or comes in a pair thus its not easy to misplace the chock. The Wheel Chock is supplied in ORANGE colour with Yellow Reflective Sticker and Rope make it easy to spot and locate the chock in dark places when a light is shine on it. This chock also ensure that driver can either chock on single wheel or chock both side of the wheels.

Product Description Specification:

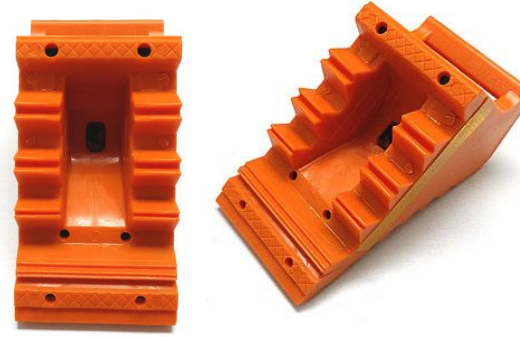
Purpose	: For regular to large car, RV car and 4t truck.
Dimensions	: 240 (L) x 120 (W) x 146 (H)
Colour	: Orange
Weight (gm)	: 1550g
Material	: PP + ABS
Indication	: Reflective Sticker
Standard (manufacturing)	: Japanese Standard

Features:

- Lightweight design for portability.
- Prevent vehicle from moving by keeping wheel in place.
- Easy access and convenience to put in your boot or tool box.
- Easy to carry as it come with carry handle.
- Applicable for Car. Truck. Buddy. Firefighting Foam Monitor. Trailer. Caravan and even chocking the pipes, drums and industrial trolley.

Package supply can be single or as a pair with and without rope:

The above is supply in a pair of 2 wheel chock c/w 900mm nylon on rope



Bottom View

Product imported from JAPAN

Can supply in Single



Product imported from JAPAN

Can supply in pairs with rope



Warning Note:

Wheels chock intended use is to wedge the wheel so that it will not roll over. It is not for drive over the chock. All driver must still maintain their hand brake in good working order and must ensure that the hand brakes are applied at all time not only on slop but on flat road surface as well.

Wheel Chocks:

Wheels chock has to be replaced once it shows signed of crack or deterioration. Depend on the frequency of use and the surface and how its use, this wheel chock can last for years if well maintain. Never drive over the wheel chock. (When wheel chock has been driven over it have to be change, **WC-M1550IG-O-NR** are made from Poly Propylene & ABS material and is very durable but it can break if drive over many times)

Supply and Marketed by
 SECURITEX ELECTRONIC SYSTEMS ENGINEERING
 BLOCK 9010 TAMPINES STREET 93 #04-145 TAMPINES INDUSTRIAL PARK A
 SINGAPORE 528844 T: 67852171 F: 65850107
 W: [HTTP://WWW.SECURITEX.COM.SG](http://www.securitex.com.sg) E: SALES@SECURITEX.COM.SG