

R50



OPERATOR FOR INDUSTRIAL SWING AND TELESCOPIC SLIDING GATES

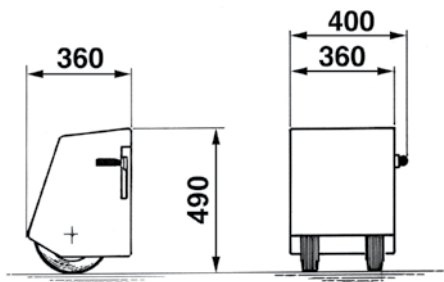


- The R50 is designed to operate large doors or gates in applications in which standard actuators cannot be used.
- On R50 in the event of power failure, simply operate the outer lever, then open the door/gate manually.
- The suspension system used on R50, installed along the edge of the gate leaf, ensures a tolerance of up to 4 cm when moving over uneven surfaces.

FOR SWING GATES WITH EACH LEAF UP TO 10 m LONG AND WEIGHING UP TO 2.000 kg

AA21580 R-50 1-phase

GAR0039	Warranty extension 4 years for R50
GAR0040	Warranty extension 7 years for R50
GAR0041	Warranty extension 10 years for R50



8 x



Dimensions in mm

TECHNICAL DATA		R50
Max. leaf weight	kg	2.000
Operating speed	m/s	0,180
Average opening time 90°	s	78
Power supply	V	230
Power absorbed	A	1,96
Actuator weight	kg	45
Protection grade	IP	54
Operating temperature	°C	-10 ÷ +55
Daily cycles suggested		300
Service	%	60
Nr of consecutive cycles guar.		4/78s

ACCESSORIES FOR R50



ABB2050 B2-CRX
pc board (for 1 or 2 R50)
with thrust regulator and radio
receiver 433MHz. With box IP55.
See pages 133 and 143



ACG8660 HORIZONTAL LOCK
12Vac



ACG8670 HORIZONTAL LOCK
12Vac



ACG8650 VERTICAL LOCK
12Vac

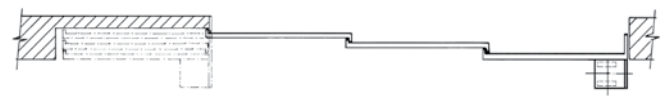
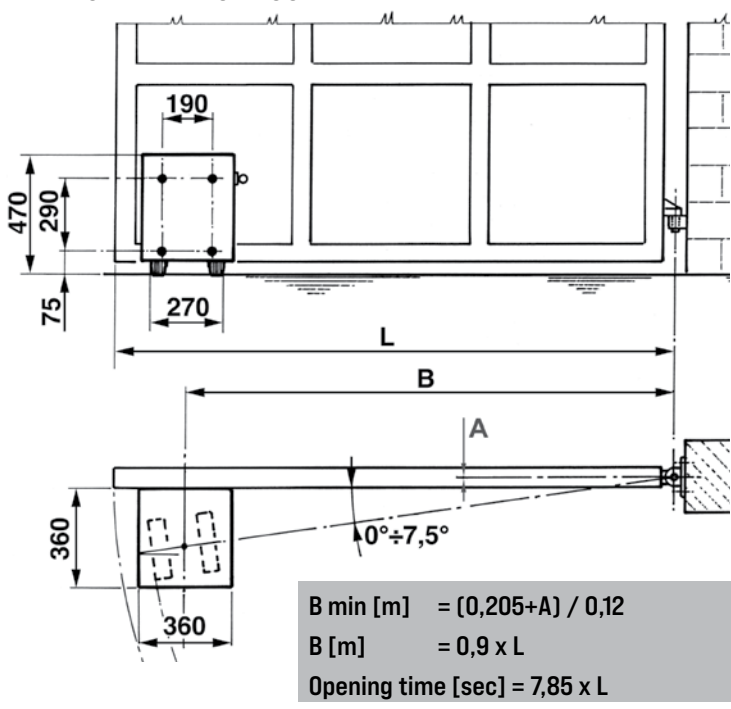


ACG5000 MECHANICAL BOLT
for 2-leaf gates to latch closed
gate to the ground



135

MINIMUM WIDTH OF DOOR LEAF 2 M



R60



OPERATOR FOR INDUSTRIAL SWING AND TELESCOPIC SLIDING GATES



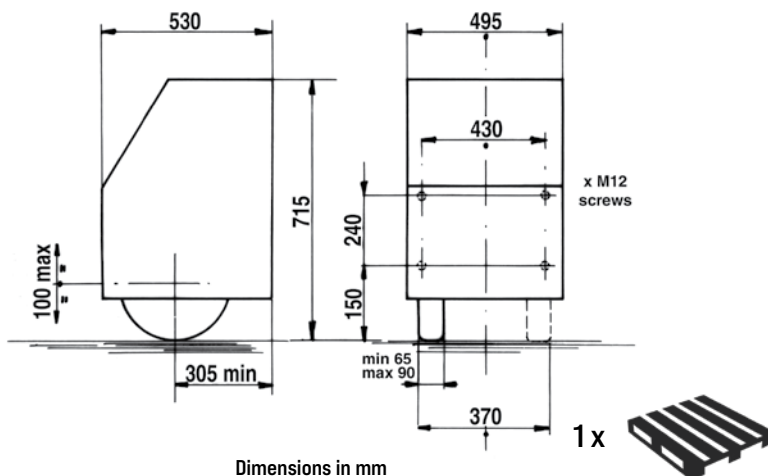
- R60 is designed to operate large doors or gates in applications in which standard actuators cannot be used.
- The suspension system used on R60, installed along the edge of the gate leaf, ensures a tolerance of up to 10 cm when moving over uneven surfaces.
- All motors are fan-cooled and they are both endowed with limit switches.

FOR SWING GATES WITH EACH LEAF UP TO 15 m LONG AND WEIGHING UP TO 12.000 kg

- AA22002 R-60 3-phase
- AA22011 R-60 ICE 3-phase

ICE With special lubricants (for immediate starts with temperatures as low as -30°C)

- GAR0042 Warranty extension 4 years for R60
- GAR0043 Warranty extension 7 years for R60
- GAR0044 Warranty extension 10 years for R60



TECHNICAL DATA		R60
Max. leaf weight	kg	12000
Operating speed	m/s	0,164
Average opening time 90°	s	116
Power supply	V	400
Power absorbed	A	3,1
Actuator weight	kg	156
Protection grade	IP	55
Operating temperature	°C	-10 ÷ +55
Daily cycles suggested		300
Service	%	100
Nr of consecutive cycles guar.		300/100s

ACCESSORIES FOR R60



ACG8550 WHEEL
for R60



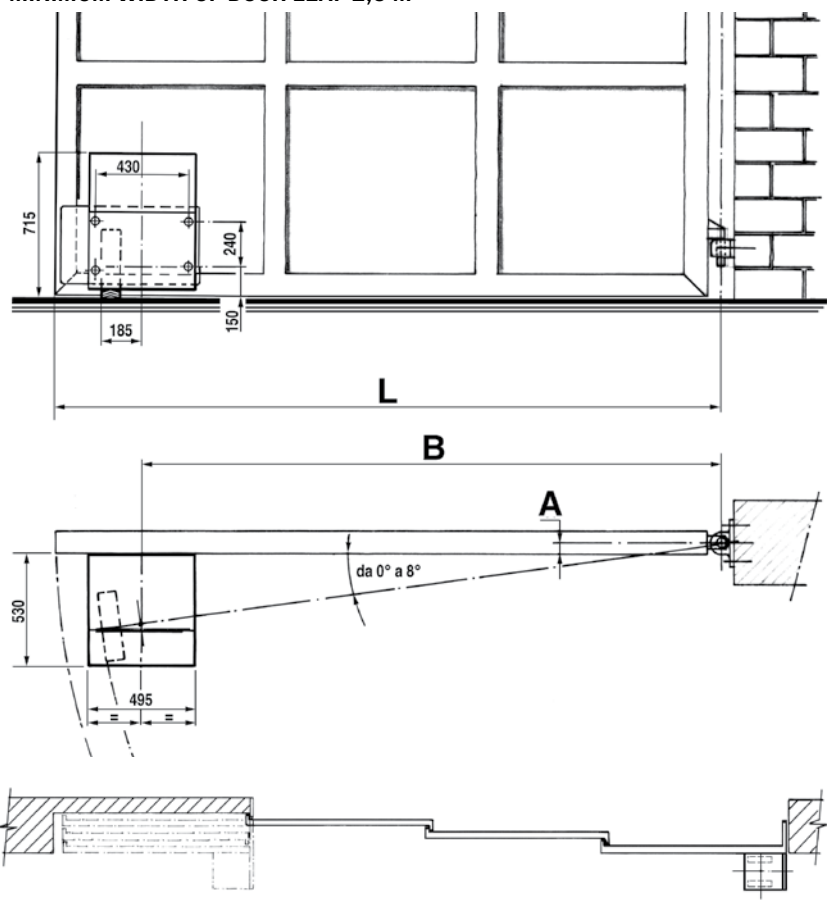
ABL1/R2RX L1/R2-CRX
pc board for 1 R60 on telescopic
sliding gate.
With box IP55.
See page 132 and 142



ABB2/R2RX B2/R2-CRX
pc board (for 1 or 2 R60).
With radio receiver 433MHz.
With box IP55.
See pages 133 and 143



MINIMUM WIDTH OF DOOR LEAF 2,5 M



B min = $(0,31+A) / 0,14$ [m]
B = $0,81 \times L$ [m]
Opening time = $7,77 \times L$ [sec]

