

EXPTC-EXPTD

EXPLOSION-PROOF INTEGRATED PAN & TILTS WITH CAMERA HOUSING

REVISION 1140



MAIN FEATURES

Absence of external wiring in rotation

Explosion-proof certified

Indoor and outdoor installations

Wide range of accessories

Weatherproof standard IP66

DESCRIPTION

The EXPT system includes a housing with the same characteristics of the EXH and a Pan & Tilt, designed for movement both in horizontal and vertical planes. The peculiar characteristic of the EXPT device is the absence of external wiring in rotation, either for the control of the Pan & Tilt or for the camera and lens. This solution makes the installation and the maintenance of the Pan & Tilt easy. The EXPT includes one multiconductor cable that comes out from the base of the Pan & Tilt through a cable-gland. The EXPT is supplied with preset and housing heater. The EXPT can be equipped with sunshield, autopan, reinforced housing heater and motors heater, and patented glass protection device (model EXPTD).

The glass protection device consists of a connection flange with the housing, a closing flange and an explosion-proof central body containing a rugged and transparent glass, a continuous current motor powered in 24Vac, two windings and a transparent Mylar film, installed just in front of the glass. The motor drives the roller to recover the dirty Mylar film, while at the same time the other roller installed on the opposite side releases the clean film. The transparent Mylar film allows about 350 steps. When the film is dirty, the operator will activate the motor shifting the film to obtain a clean camera picture. The end of the Mylar film will be indicated to the operator through marks printed on the last 50cm of the film.

The Pan & Tilt units EXPT, supplied with integrated camera housing, are made with strong Anticorodal aluminium die-cast alloy of AISi 7Mg EN - AB 42000 group. Depending on the model, all external components are stove enamelled using powder or with special coatings offering an excellent resistance to UV rays, salt-spray, environment polluting substances (mod. 035R, mod.033R). They are constructed according to the 94/9/CE ATEX standard and IEC 60079-0: 2007, IEC 60079-1: 2007, IEC 60079-31: 2008, GOST-R standard and the Chinese standards.

EXPTWB

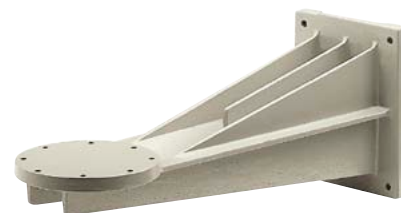
Bracket for EXPT, constructed in solid, anticorodal aluminium alloy. It is particularly suitable for external applications. It can support a maximum non-static weight of 100kg.



EXPTC + EXPTS000



EXPTD + EXPTS001



EXPTWB000

EXPTC-EXPTD

AVAILABLE MODELS							
Code	Housing heater 24Vac	Pre-wired multipolar cable	Preset	Autopan	Glass protection device	Reinforced heater and P&T heater 24Vac	Max consumption
EXPTC000	•	•	•				145W
EXPTC010	•	•	•	•			145W
EXPTC033R		•	•	•		•	145W
EXPTD001	•	•	•		•		145W
EXPTD011	•	•	•	•	•		145W
EXPTD035R		•	•	•	•	•	145W

TECHNICAL DATA

GENERAL

Non-corrosive die-cast aluminium (anticorodal)

Bicomponent polyurethane enamel with orange peel effect, RAL7032

Special painting for low temperature, blue colour RAL7001 (EXPTC033R, EXPTD035R, EXPTWB00R). Resistant to stress cracking, adverse weather conditions, detergents, salt-spray and typical airborne pollutants

Supplied with instruction manual and conformity declaration

MECHANICAL

0-360° horizontal movement

Horizontal speed: 6°/s

Horizontal Torque: 2.5kgm

±90° vertical movement

Vertical speed: 2.4°/s

Vertical torque: 6kgm

Horizontal limit switch adjustable only for the Autopan function

1 cable gland Ex d 3/4" NPT IP66 ATEX for armoured cables in the base of the P&T according the housing marking

One multiconductors armoured cable normally supplied 7.5m (24ft) length, diameter 20.8mm (0.8in): 25 poles 0.5mm, 4 poles 1mm, 2 RG175, 75 Ohm

External dimensions

EXPTC 427.5x571.4x560mm (16.8x322.5x22in)

EXPTD 573.5x581x580mm (22.6x22.9x22.8in)

Internal dimensions

EXPTC Ø 180x380mm (7x14.9in)

EXPTD Ø 180x460mm (7x18.1in)

Internal usable area

EXPTC 100x100x280mm (3.9x3.9x11in)

EXPTD 100x100x280mm (3.9x3.9x11in)

Glass window

EXPTC Ø 114mm (4.5in)

EXPTD 70x56mm (2.7x2.2in)

Glass protection device

- Glass protection device: Ø 250x140mm (9.8x5.5in)
- Mylar film 80mm (3.1in) wide and 18m (59ft) length, about 350 shifting steps, marks printed on the last 50cm (19in)

Wall Bracket

- Load rating: 100kg (220lb)
- Length: 676mm (26.6in)

ELECTRICAL

Power supply IN 24Vac, 50/60Hz

Horizontal and vertical motor consumption: 50W max

Standard vertical and horizontal preset potentiometers

Heater Ton 10°C±4°C (50°F±7°F) Toff 25°C±3°C (77°F±5°F)

- IN 24Vac, consumption 20W max

Reinforced heater Ton 10°C±4°C (50°F±7°F) Toff 25°C±3°C (77°F±5°F)

- 3 resistors in the housing
- 2 resistors in the P&T (one for each motor)
- Consumption 100W max

Glass protection device

- 24Vac/Vdc, consumption 2W max

Devices to install inside the housing

- Camera equipped with lens with max total power of 20W
- Power supply max 24Vac (only for analog camera)

ENVIRONMENT

Indoor / Outdoor

Operating temperature with heater: -20°C/+50°C (-4°F/+122°F)

Operating temperat. with reinforced heater: -40°C/+50°C (-40°F/+122°F)

Always refer to the temperature in the marking.

CERTIFICATIONS

ATEX (EN 60079-0: 2010, EN 60079-1: 2008, EN 60079-31: 2010)

- II 2G Ex d IIC T6 Gb
- II 2D Ex t IIIC T85 °C Db IP66

CE 0044: notify number from competent body

IECEX (IEC 60079-0: 2007, IEC 60079-1: 2007, IEC 60079-31: 2008)

- Ex d IIC T6 Gb
- Ex t IIIC T85 °C Db IP66

GOST-R

- 1 Ex d IIC T6 и DIP A21 T_A T6

CNEX

- Ex d IIC T6 DIP A21 TA T6

ACCESSORIES

EXPTS000 Sunshield 650mm (25.6in) for EXPTC

EXPTS001 Sunshield 760mm (29.9in) for EXPTD

BRACKETS AND ADAPTORS

EXPTWB000 Bracket for EXPT RAL7032

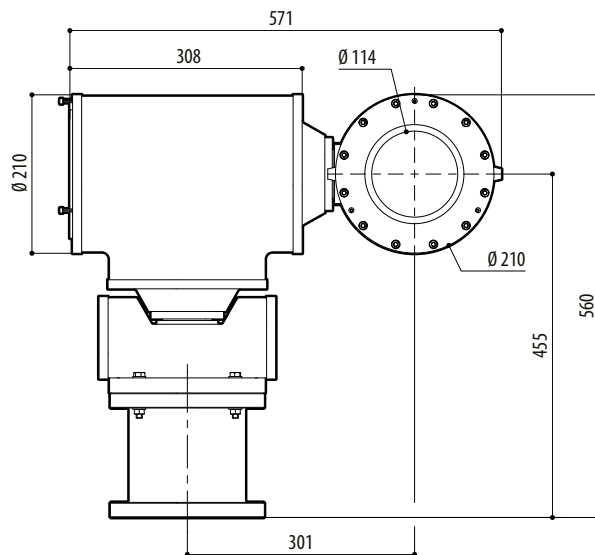
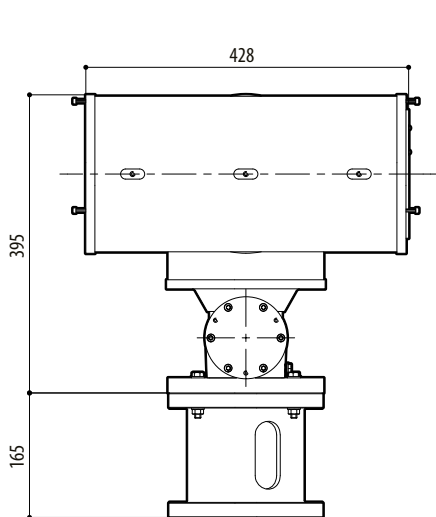
EXPTWB00R Bracket for EXPT RAL7001

RELATED PRODUCTS

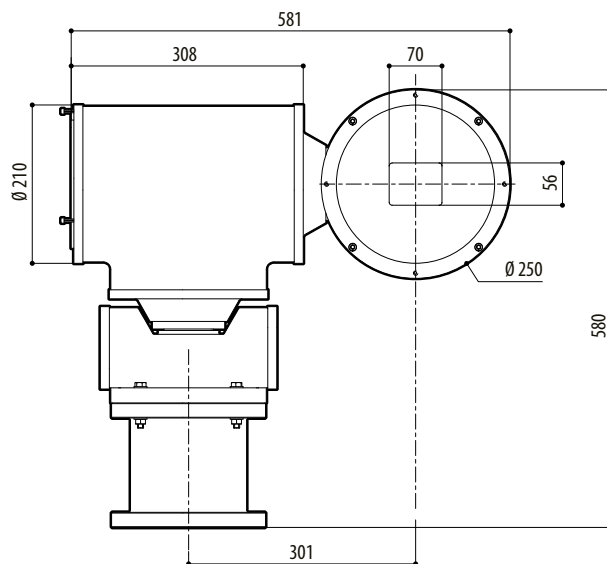
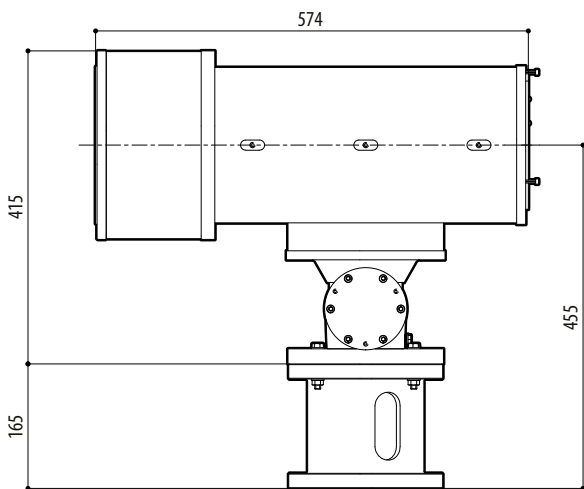
EXDTRX3	Telemetry receiver 17 functions, 230Vac
EXDTRX324	Telemetry receiver 17 functions, 24Vac

SPARE PARTS

OEXMYLAR	Mylar film replacement kit, 18m (59ft) 350 steps
OEXVET	Front flange complete with glass for EXPTC RAL7032
OEXDPV	Front flange complete with glass protection device for EXPTD RAL7032
OSLIEX	Internal slide complete with heater for EXPTC
OSLIEXD	Internal slide complete with heater for EXPTD



EXPTC

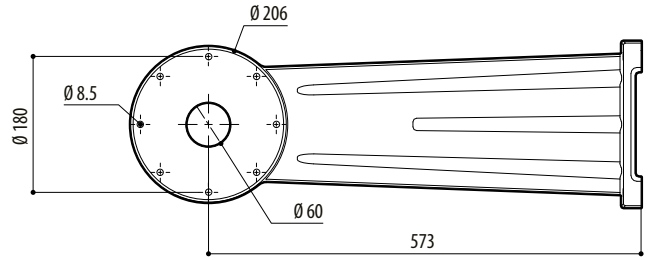
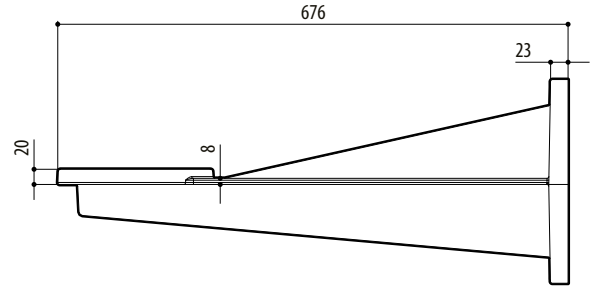
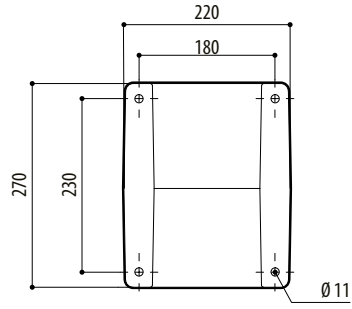


EXPTD

mm 1:10

PACKAGE							
Code	Unit weight		Package weight		Package dimensions (WxHxL)		Master carton
	kg	lb	kg	lb	cm	in	unit
EXPTC	56.5	124.6	61.2	134.9	76.0x41.0x67.0	29.9x16.1x26.4	-
EXPTD	62.0	136.7	66.0	145.5	76.0x41.0x67.0	29.9x16.1x26.4	-
EXPTWB	11.0	24.3	11.0	24.3	-	-	-

EXPTC-EXPTD



EXPTWB

mm 1:10