

# Fire Alarm

## P. B. L. Combination Series

AH-9718



AH-9719

AH-9717

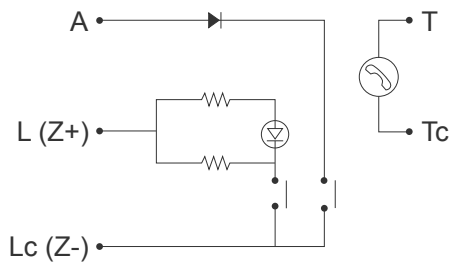
### Manual Call Point (Indoor Reusable)

- Emergency press alarm, immediately output fire alarm signal.
- Indicator above fire alarm push-button is to confirm the alarm signal transfer.
- There are phone jack and reset button behind the cover cap.
- Type I is simultaneous dual loop, Type II is simultaneous dual signal transfer (refer to diagram below)
- **Optional Base is Available.**

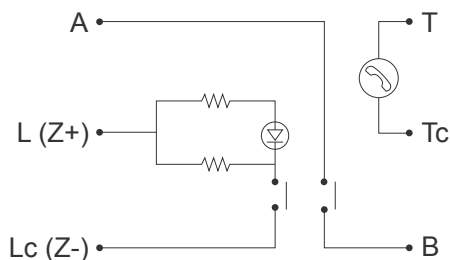
### Specification

Model	AH-9717
Operating Power	24V DC 30mA
Operating Contact	Max. 30V DC 500mA
Sub-function	Phone jack, confirmation lamp, reset button.
Material	Fire-proof plastic
Dimensions	140mm(Dia.) x 45mm(H)
Weight	About 160g

#### Type I



#### Type II



220V AC 0.4A  
24V DC 0.8A

### Fire Alarm Bell 4"

- Motor energized, low power consumption (28mA), long operating life.
- Bell shell is made of steel plate, so it will sound loud and clear.

### Specification

Model	AH-9718
Consumption Current	24V DC 28mA
Energize Type	Motor
Sound	90dB/M and above
Material	Bell shell : steel plate Bell base : 1.2mm steel plate
Dimensions	100mm(Dia.) x 50mm(H)
Weight	About 450g

### Fire Indicating Lamp

- Uses white bulb (or low current LED) and installed inside the red lamp cover.
- Its luminance is clear visible within 10 meters.

### Specification

Model	AH-9719
Consumption Current	24V DC 60mA / LED 20mA
Bulb	30V/2W white bulb or LED
Lamp Cover	Fire-proof plastic
Lamp Base	Fire-proof plastic
Dimensions	90mm(Dia.) x 70mm(H)
Weight	About 70g

Approvals

**CNS**