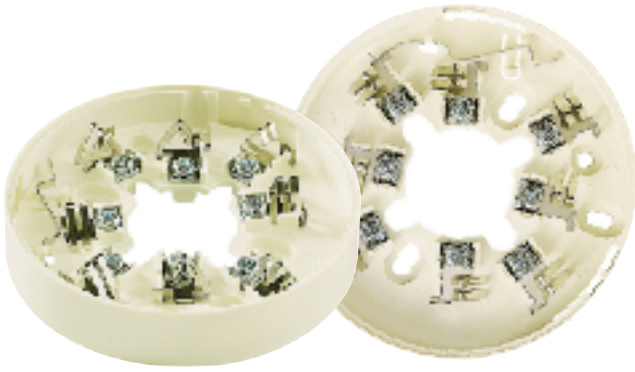


Multi-Purpose Mounting Base



Model # AHMB-031

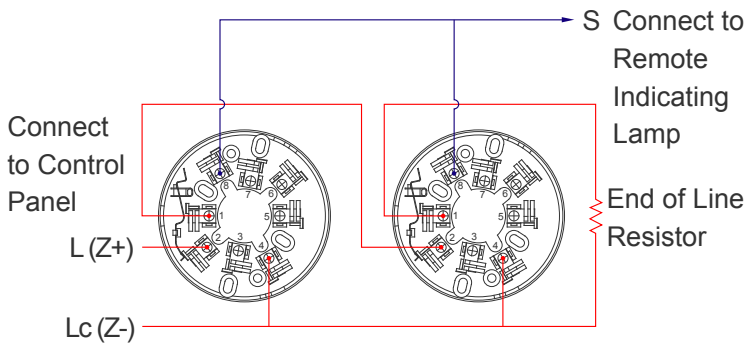
Design Characteristics

New generation detector base designed for use on all AH-031 series fire detection devices. It has a built-in shorting spring for use when the detector head is removed which will prevent an open circuit fault condition from control panel during maintenance.

Wiring Diagram

2 , 3-Wire Type

3-wire type (see blue line)



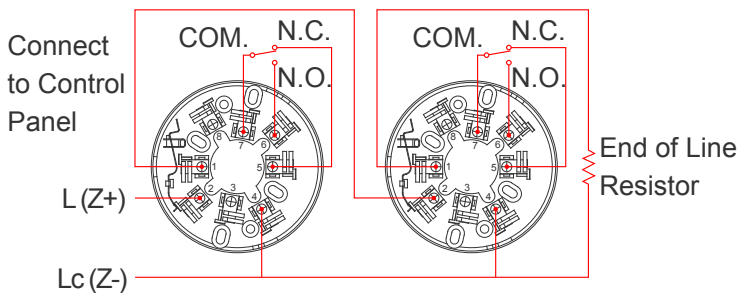
4-Wire Type

(Relay Output)

Contact Ratings

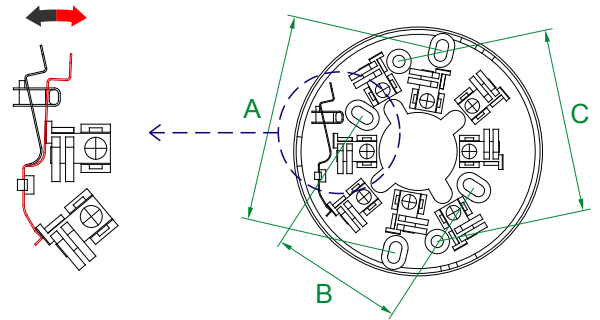
0.8A @30V DC

0.4A @125V AC



Black : Normal

Red : Close Circuit



Dimensions

Dia. ϕ 102mm

Screw Hole

A : 81mm ~ 89mm

B : 50mm ~ 59mm

C : 75.5mm

Resettable

Alarm Output :

Normal Status

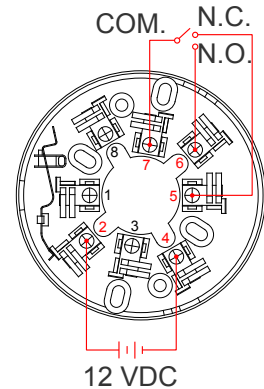
5 & 7 short circuit

6 & 7 open circuit

Alarm Status

6 & 7 short circuit

5 & 7 open circuit



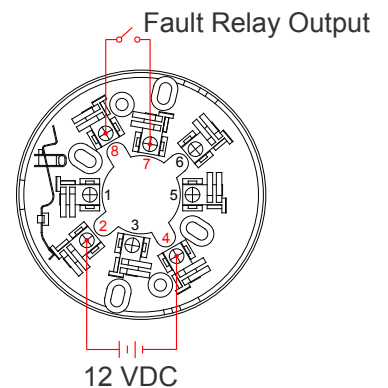
Disconnection or Power-off Warning :

Normal Status

7 & 8 short circuit

Fault Status

7 & 8 open circuit



Contact Ratings

0.8A @ 30V DC

0.4A @ 125V AC