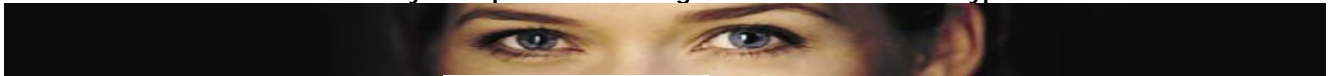


# Securitex E Phone Solo.

The only door phone that integrate to all PABX and Keyphone



**Model SEPS 01A**

The **Securitex E Phone Solo** provides the latest in convenient door communications for any single residential or commercial intercom application. Using the **Securitex E Phone Solo** is easy. When you hear the distinctive ring you simply pick up any phone and you are automatically connected to the door. The unit is compatible with cordless phones to allow you to answer the door from anywhere in your house or even outside.

The **Securitex E Phone Solo** comes with built-in call waiting to allow you to answer the door and return to an outside call. A second door station release can also be connected to the control unit if desired. If you want to turn off the Enterphone Solo for any reason you simply unplug the controller. If someone knocks at the door, instead of pressing the button, you can still communicate by picking up any phone and calling into the door station.

## **Whole House Paging**

Using the **Securitex E Phone Solo** second door station port can expand the system to include paging functions. For example, a station mounted in the kitchen can be used to page the phones in other rooms. Up to four stations can be mounted throughout the house to be used this way.

## **Open Doors or Gates at the Touch of a Button**

If you have an electric lock or gate you can use the optional activator to press the \* button on your phone to let your visitor in. You can also call into the **Securitex E Phone Solo** to open the gate even when not using the intercom.

## **Easy to Install**

The **Securitex E Phone Solo** requires only two wires for installation, making an upgrade from an existing doorbell extremely simple. Developers have the option of pre-wiring for a doorbell but using the same wires for owners who would prefer the **Securitex E Phone Solo**.

## **PABX and Keyphone system integration**

The **Securitex E Phone Solo** is probably the only door station that integrates seamlessly with all kind and types of Keyphone's and PABX system like Nortel, Toshiba, Panasonic, Philips Etc.

## **SPECIFICATIONS**

### **Dimensions:**

Door Station : 3 6/8"w x 5 1/8"h x 1"d  
Controller : 5 6/8"w x 3 7/8"h x 1 6/8"d  
Door Release Controller : 4 7/8"w x 3 1/8"h x 1 2/8"d

**Power** : 230V AC plug-in

**Wire Requirements** : 18 gauge LVT 2 conductor

### **Part Numbers:**

421-100 - Door Station (c/w housing)  
421-200 - Controller  
421-300 - Door Release Controller  
421-500 - Door Station & Controller

## **Marketed and supply by**

Securitex Electronic Systems Engineering  
Block 9010 Tampines St 93 #04-145 Tampines Industrial Park A Singapore 528844 Tel: 65-67852171  
Fax: 65-67863351 <http://www.securitex.com.sg>