

## Warranty



To receive after-Sale service, have the following ready when you contact our branches

1. Name of the product
2. Model number of the product
3. The area of problem
4. Phone number and address at which you can be contacted.

## Warranty Card

PRODUCT	
MODEL	
DATE PURCHASED	
WARRANTY PERIOD	
AGENCY ADDRESS	

### KOCOM Warranties the original purchaser of this product as follows.

- 1) This product is produced under strict quality control and inspection procedures.
- 2) If this product breaks down during proper use as a result of product defect, KOCOM will repair it within one year from date of purchase free of charge.
- 3) The following cases will be subject to charge, even during warranty period:
  - a. Breakdown during transport, or through careless treatment, by consumer.
  - b. Breakdown cause by unauthorized repair, or system modification.
  - c. Breakdown caused by natural disaster or power disorder.

This manual is based on the date as shown in the right and specifications are subject to change without notice for quality improvement.

KVM604EM-02 02.05

KOCOM

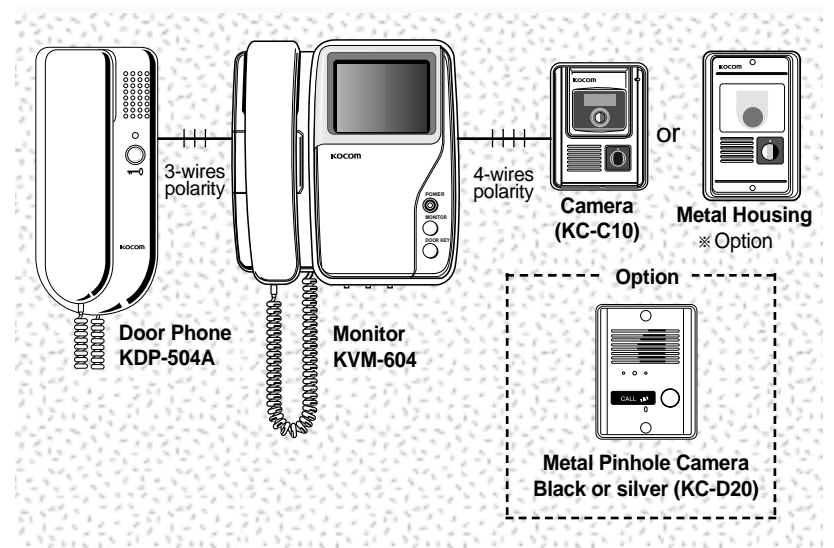
# VIDEO DOORPHONE

KVM-604 Operating Installation Manual

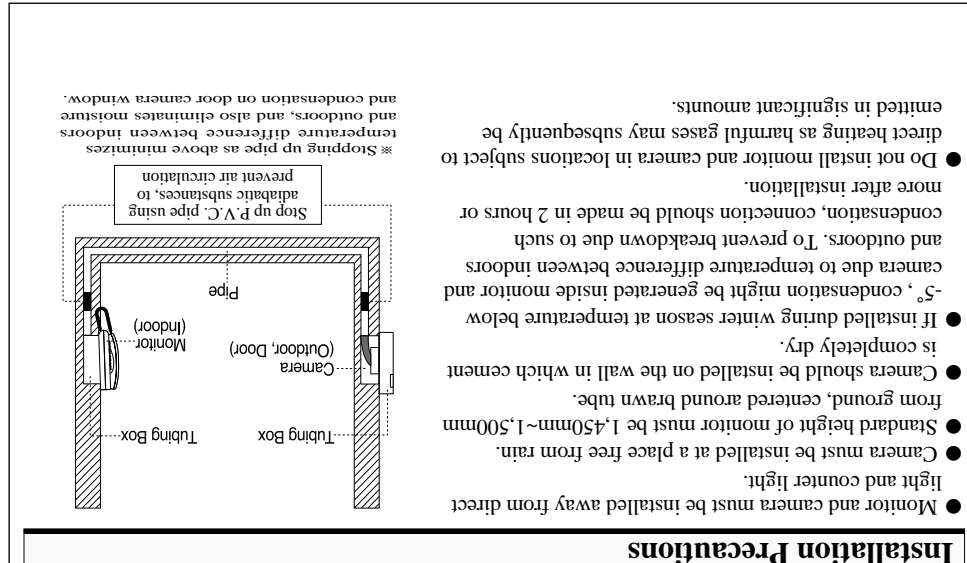
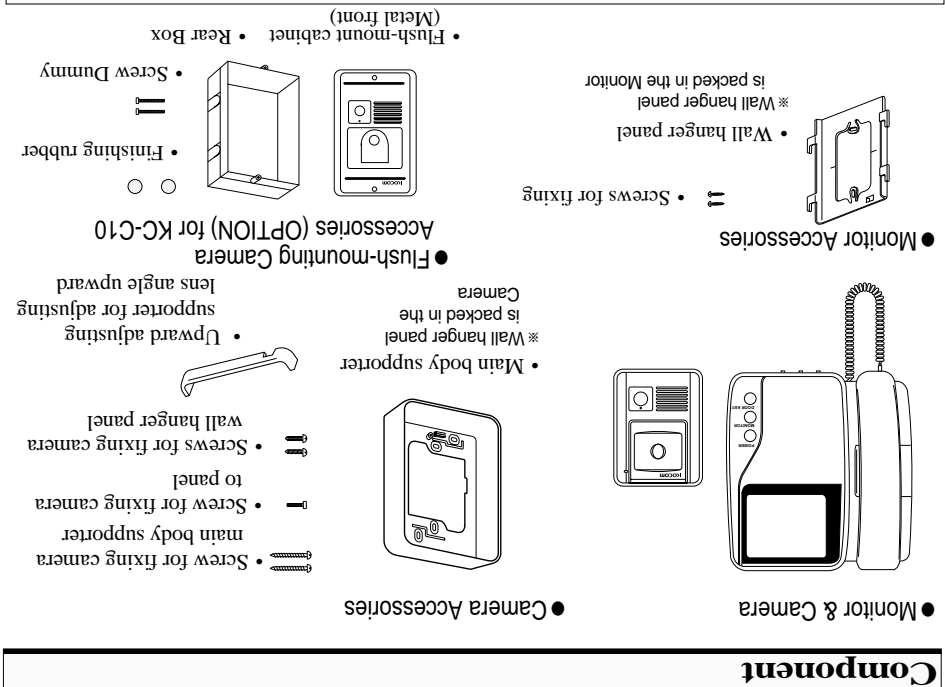
### Clear & Bright Picture at Low Light

- 4" Flat Monitor
- 4 Wired
- Easy Installation
- Slim Size Camera
- Wide view angle (120°)
- AC 90V to 250V free Voltage

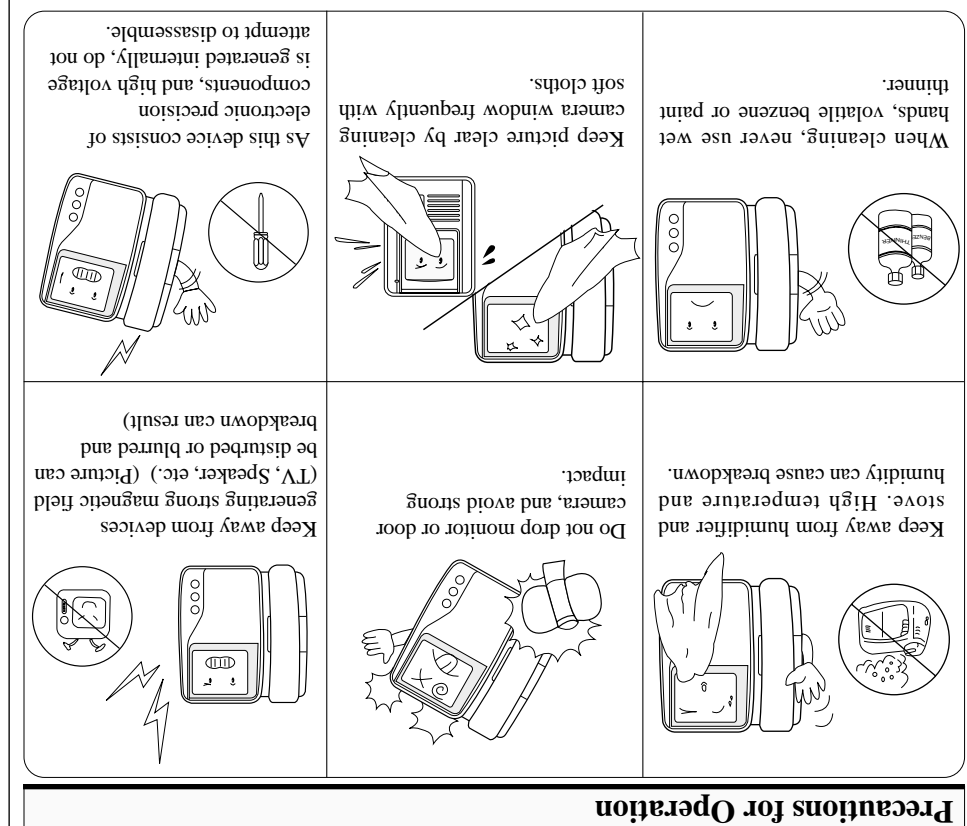
Thank you very much for purchasing KOCOM video doorphone. please read this manual thoroughly to ensure correct usage, before operating



Specifications		
MONITOR (KVM-604)	Power source	Power Built-in AC 110V~220V
	Power consumption	Max. 1.2W, Stand by : 0.8W
	Ambient temperature	0°C~+50°C
	Brann tube	4 inch Flat Tube (B/W)
	Communication system	Duplex handset conversation
	Call signal sound	Chime sound (Ding-dong)
	Output Impedance	Picture : 750hm, Voice : 600hm
	Wiring	4 Wired in polarity (Power, GND, Voice, Video)
	Max Wiring Distance	φ 0.65 Single Cable/50m, 5C-2V Coaxial Cable/100m
	Dimension	204(W) × 210(H) × 50(D)mm
CAMERA (KC-C10) or (KC-D20)	Power source	DC12V 1V(power from Monitor)
	Power consumption	Max: 2.5W
	Assurance temperature	-10°C~50°C
	Scanning frequency	Horizontal: 15.734KHz, 15.625KHz Vertical: 50Hz (CCIR)/60Hz (EIA)
	Lens	F:2.0, f:3.0mm
	Min. Illumination	0.1Lux (LED ON)
	Dimension	96(W) × 127(H) × 32(D)mm
	Illumination	Intra-red LED
	Angle of picture	Diagonal 120°, 90° (KC-D20)
	Power source	DC12V 1V(power from KVM-604 Monitor)
DOOR PHONE (KDP-504A)	Power consumption	1.5W(In Load)
	Signal Sound	Electronic chime Sound
	Wiring	3Wired in polarity
	Range	50mm(φ 0.65mm)



## Installation Precautions

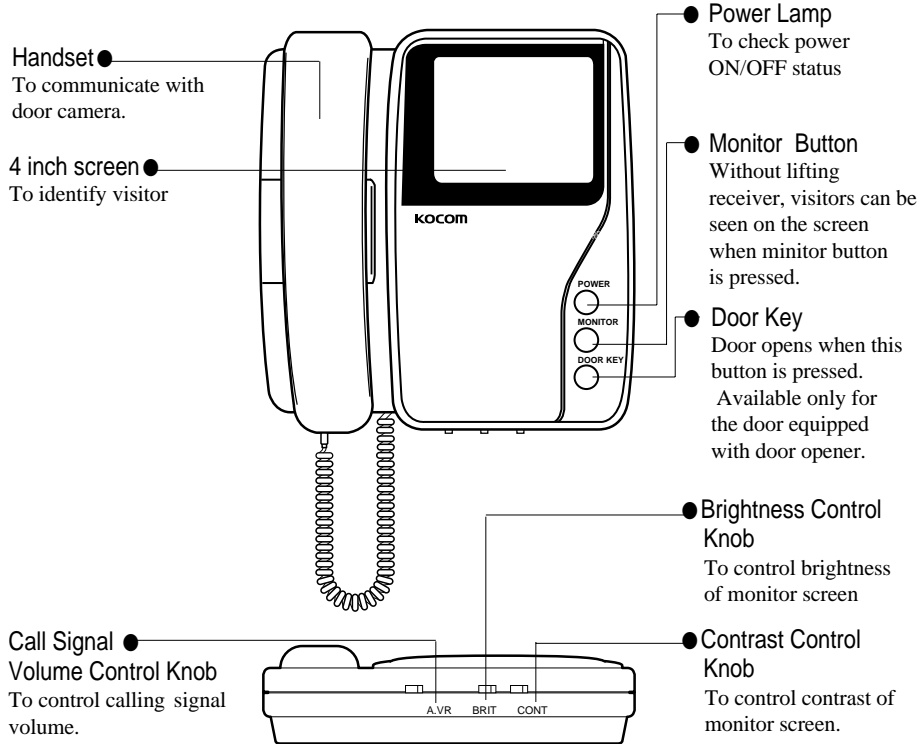


## Precautions for Operation

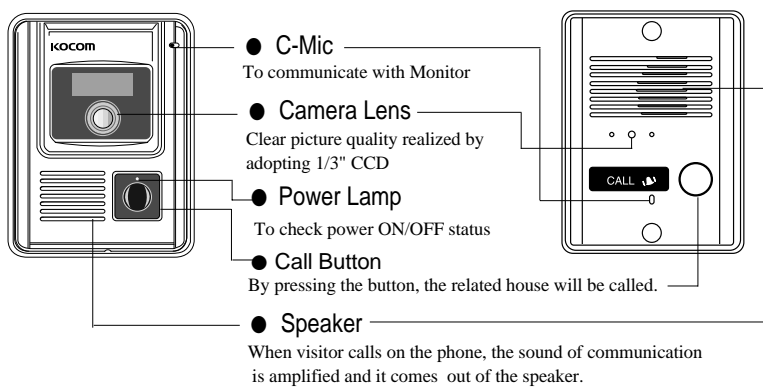


## Name of each part

### ■ KVM-604 Monitor

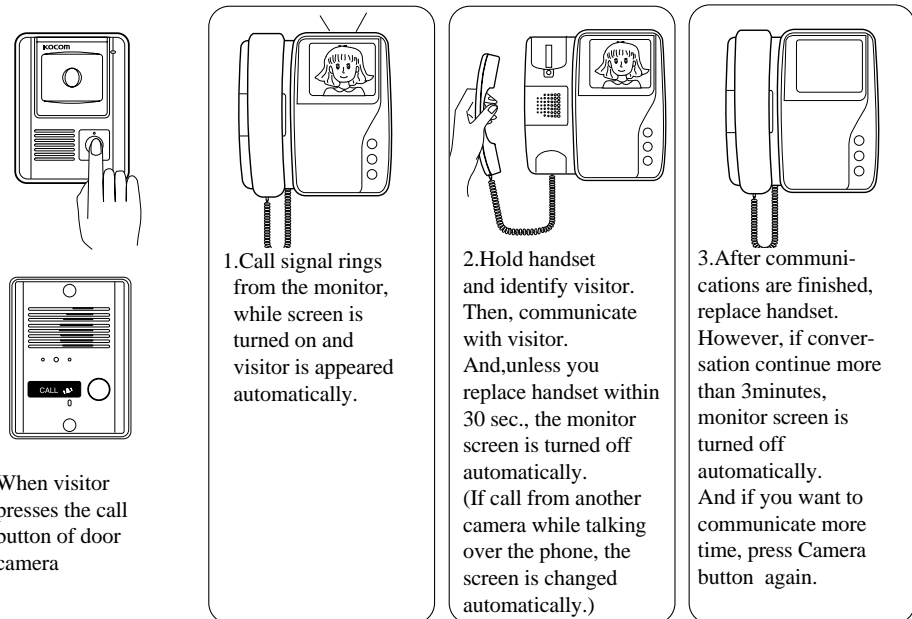


### ■ KC-C10 Camera & KC-D20 Metal Pinhole Camera

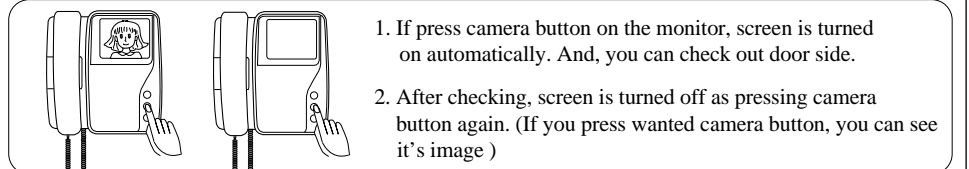


## How to operate (Instruction for operating)

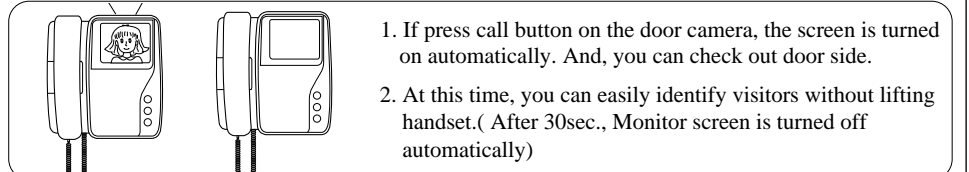
### ■ Identifying and talking to visitors



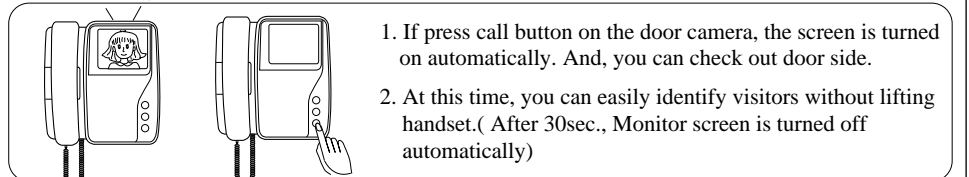
### ■ Checking out door side - Don't need to hold handset



### ■ Identifying visitors

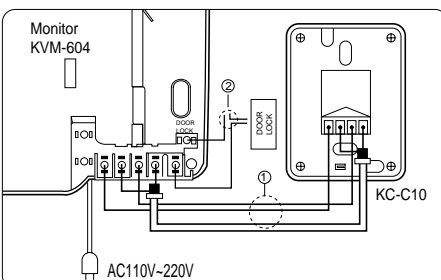


### ■ Opening front door automatically



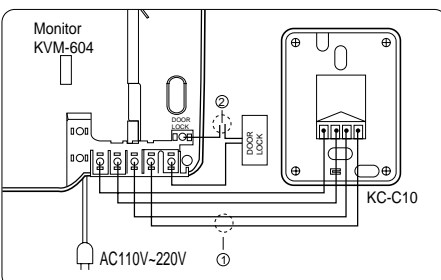
## Video Doorphone Wiring Diagram

### ■ Coaxial Cable Wiring



- For the dotted line in ①, Coaxial Cable wiring (Max. cable distance 100M)
- For the dotted line in ②, TIV 1.6 must be used.

### ■ Interphone Wiring



- For the dotted line in ①, TIV 0.65 must be used. (Max. cable distance 50m)
- For the dotted line in ②, TIV 1.6 must be used.



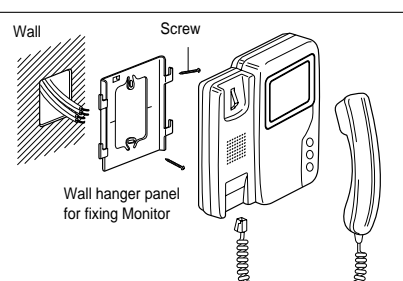
### Caution for wiring

- Available video doorphone wiring with TIV 0.8mm is less than 50m in length.
- Connecting wiring between monitor and door camera should not be installed near other electrical cable, nor be horizontal. (In such case, clear picture can not be expected due to interruption by electrical noise)

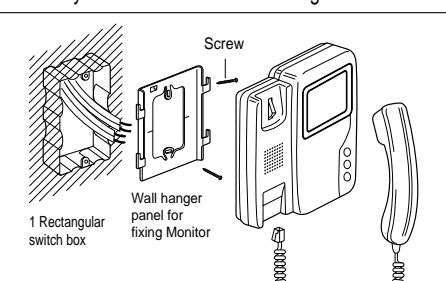
Transmission Wiring	4-wired
Braun tube	4-INCH B/W Braun tube
Cable Distance	TIV0.5 φ : Max. 20m
	TIV0.6 φ : Max. 30m
	TIV0.65 φ : Max. 50m Coaxial cable : Max. 100m

## Monitor Installation

### Basic Installation method of Monitor

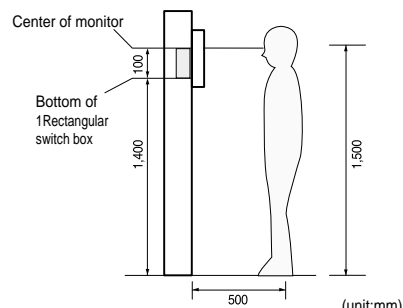


### When system is attached to 1 rectangular switch box



### ■ Standard height monitor

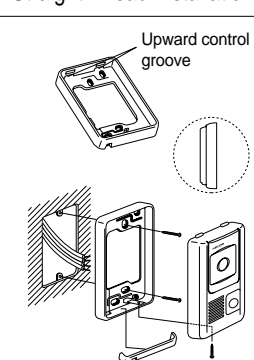
- Standard height of monitor is ranged 1,450 ~ 1,500 from bottom to the center of monitor screen.
- For installation, avoid the places where there is any excessive humidity, magnetic force, dangerous chemicals, direct ray of sun, and any places near a heater which can cause break down.



## Door camera Installation

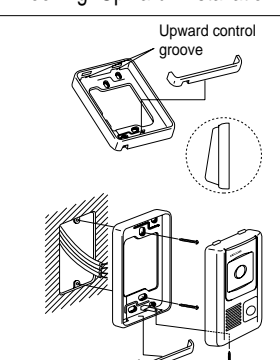
### ■ KC-C10 Surface-mounting Door Camera Installation

#### Straight Ahead Installation



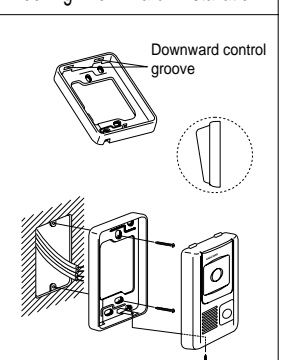
After attach the body supporter with 2 screws, put the Door Camera into the grooves of body supporter, and then fix it with a screw.

#### Looking "Upward" Installation



After attach the body supporter with 2 screws, insert the upward support into the upward groove of body supporter, and then fix it with a screw.

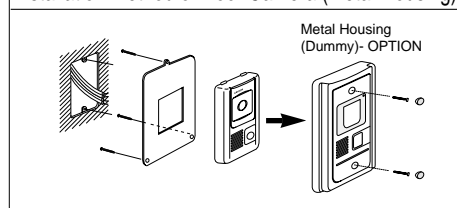
#### Looking "Downward" Installation



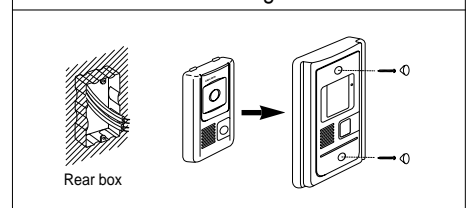
After attach the body supporter with 2 screws, insert the Door Camera into the downward control groove, and then fix it with a screw.

### ■ KC-C10 CAMERA, (Metal Housing-Option)

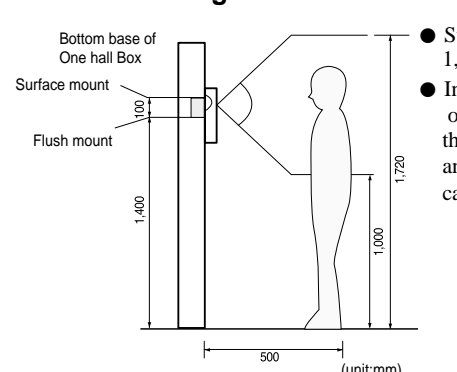
#### Installation method of Door Camera (Metal Housing)



#### Flush Mounting Camera



### ■ Standard Height of Door Camera



- Standard height of the door camera is 1,400mm ~ 1,450mm from the bottom of one camera to the floor.
- In case that the height of Door camera exceeds the range of min. 1,250mm ~ 1,550mm, it is impossible to control the screen picture with only the lens angle, and therefore, be careful of the height of camera installation.