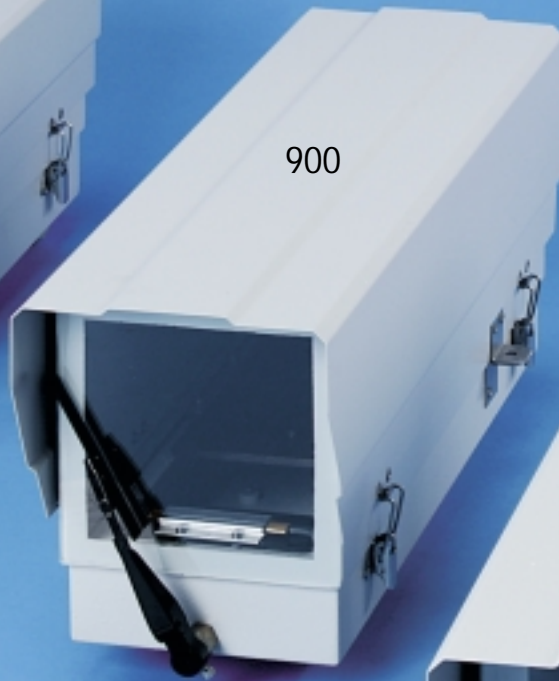




Mitre environmental camera housings



901



900



902



Strong lightweight construction

Extended dimensions

Deep bottom tray

Built to last

Weatherproof

Accessories

PTC Resistor heater

Cable management

Integral wiper option

Proven traditional design. Fully welded sheet aluminium casing and tray

Extra height and width to accommodate larger lenses

Suitable for housing integral wiper or accessories such as receivers or RF TX's & Rx's

Stainless steel fastenings

Sealed to IP rating 66

Extended paxolin camera plate and stainless steel safety strap

Progressive performance which does not require a thermostat

Three entry glands, two at 20mm and one at 25mm for Kopex or Adaptaflex

Micro switch self parking wiper with blade toggle action

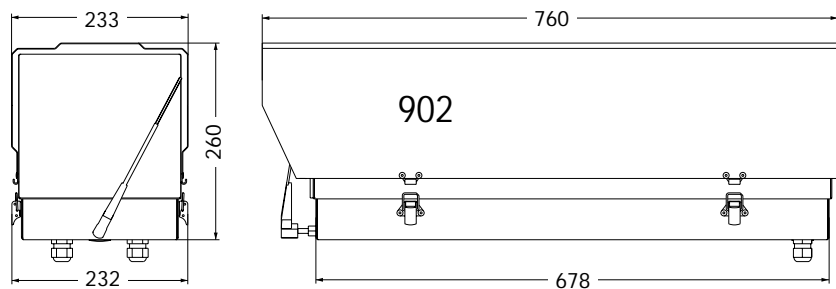
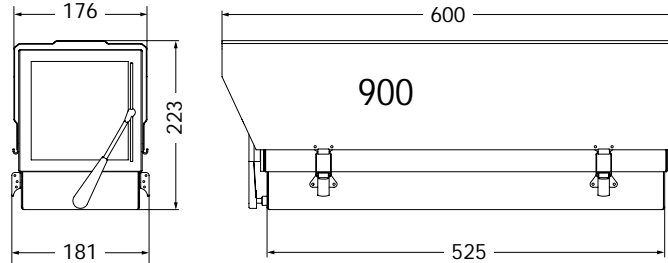
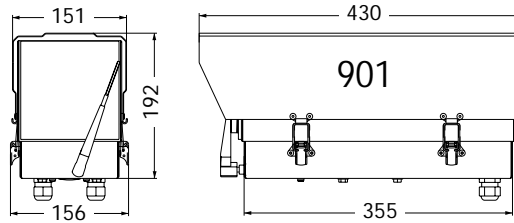




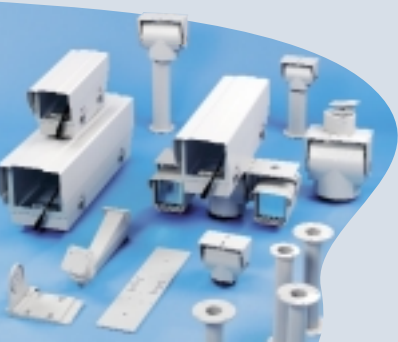
Mitre environmental camera housings

The Mitre range of environmental camera housings are manufactured to a proven and traditional design.

The units are extremely compact but are designed to accommodate the larger camera / lens dimensions required for Town or City centre projects. Stainless steel fittings and fastenings are used throughout to ensure a long operational life. The IP rating is 66 and three entry glands are provided to ensure proper cable management. Standard accessories include an extended paxolin camera plate, steel safety strap and wiring distribution block. A PTC resistor heater with progressive performance is also provided which eliminates the need for a thermostat. A deep base allows the fitting of an optional integral wiper which incorporates a micro switch for self-parking.



Dimensions (mm nominal)	Small 901	Medium 900	Large 902
Height	192	230	259
Width over clips	156	180	232
Width over sunshield	151	174	233
Length over sunshield	430	600	760
Depth inside base	55	55	55
Weight (Kg)			
without wiper	<2.5	<3.5	<6.0
with wiper	<3.0	<4.0	<6.5
Fixing centres			
Base	4 holes tapped M6 on 101.6 PCD (4") square to base		
Platform	4 slots 7.0 wide x 25 long in 225 long Paxolin plate. (1 x 1/4" BSF hex screw supplied)		
Voltages	240 V AC, 24 V AC, 110 V AC, 12 V DC, 24 V DC nominal		
Capacity (l x w x h)	330 x 114 x 110	510 x 140 x 145	650 x 180 x 170
<i>(Max camera and lens size)</i>			
Options	Integral self parking wiper, fan cooling, washer, security option, toughened glass		
Heater	Progressive up to 32W as temp. drops below 20°C		
Wiring and connections	Single row (or double row with wiper option) 12 way terminal block(s) 2 x 20 mm cable glands plus blanked 25 mm hole for Kopex or Adaptaflex		
Recommended cable	16/0.2 (rated at 230V for mains versions)		
House colour	Goose Grey, textured, semi gloss (BS4800 00A 05)		
Maintenance	None required		
Temp. Range (°C)	- 20 to + 50		



Metham Aviation Design Limited
Station Approach, Four Marks, Alton
Hampshire GU34 5HN, UK

Tel: +44 (0)1420 565618. Fax: +44 (0)1420 565628
Email: info@madcctv.com Web: www.madcctv.com

