



specialist equipment:

explosion-proof



Certified explosion-proof  
No exposed wiring  
Anticorrosive aluminium construction  
Baked enamel finish (RAL7032)  
Weatherproofed to IP65  
Wide range of options and accessories

Certified to ATEX standards, the EEX series has been designed to meet or exceed the demands of hazardous areas where flammable gases may be present. Fully supported by MAD's experienced after-sales team, the range comprises explosion-proof housings and integrated housing/pan and tilt combinations which exploit proven, patented technology to provide uncompromising reliability and performance in the most volatile conditions imaginable.

Together with our other ranges of heads, housings and accessories, there's now a bomb-proof argument for specifying, site-wide, all your ancillary CCTV equipment from single source...





specialist equipment:

explosion-proof

## common specification

### General

Non-corrosive die-cast aluminium (anticorrosive).  
Epoxy polyester powder painted RAL7032 colour.  
Low temperature models painted with blue plast-coat - resistant to stress cracking, adverse weather conditions, detergents, salt-spray and typical airborne pollutants.  
Supplied with instruction manual and conformity declaration

### Operating temperatures (limit range)

EXHC/EXHD/EXPT/EXPTD

-20 °C + 50 °C (-4 °F to 122 °F)

EXHC003R/EXHD005R/EXPTC033R/EXPTD035R

-30 °C + 50 °C (-22 °F to 122 °F)

**Compliance:** According to the directive 94/9/CE  
Atex (certification released by TÜV Nord)

Group II (Surface device)

Category 2 (elevated protection degree, can be installed in zone 1, 21 and zone 2, 22)

Atmosphere GD (gas and dust)

EEx Explosion-proof

d Explosion proof housing

IIC Group protection

T6 Temperature classification

EXHC000/EXHC003R/EXPTB000/EXPTB010

Ⓢ II 2 GD EEx d IIB T6

CE 0032 according to 94/9/CE Atex

IP65

EXHD001/EXHD005R/EXPTC000/EXPTC010/EXPTC033R

Ⓢ II 2 GD EEx d IIC T6

CE 0032 according to 94/9/CE Atex

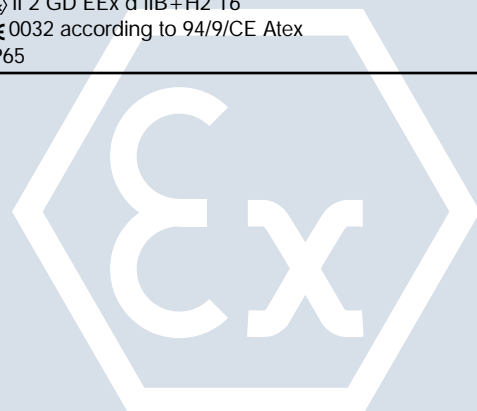
IP65

EXPTD001, EXPTD011, EXPTD035R

Ⓢ II 2 GD EEx d IIB+H2 T6

CE 0032 according to 94/9/CE Atex

IP65



## EX housings

Built from 10-12mm thick anticorrosive aluminium, the IP65 rated EXHC explosion-proof housing features an integral heater and is suitable for most camera/lens combinations. The similarly specified EXHD is fitted with a patented, user-controlled scrolling film mechanism to maintain visibility in dirty environments. Options include sunshields (shown) and low (-30°C) temperature versions - EXHC003R & EXHD005R.

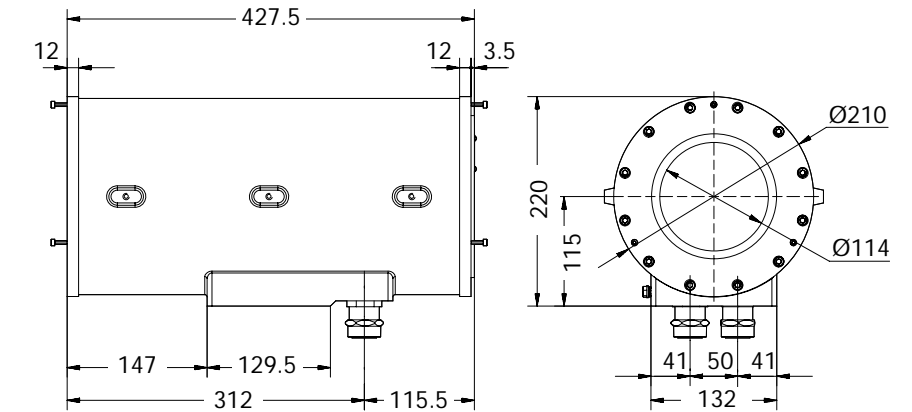
<b>Gas cable glands</b>	2 x 3/8"	
<b>Housing dimensions</b>		
External	EXHC	Ø 210 x 430mm (8.2 x 16.9in)
(ØxL)	EXHD	Ø 250 x 575mm (9.8 x 22.6in)
Internal	EXHC	Ø 180 x 380mm (7 x 14.9in)
(ØxL)	EXHD	Ø 180 x 460mm (7 x 18.1in)
Internal usable	EXHC	100 x 100 x 280mm (3.9 x 3.9 x 11in)
(BxHxL)	EXHD	100 x 100 x 360mm (3.9 x 3.9 x 14.1in)
<b>Window dimensions (BxH)</b>		
	EXHC	Ø 114mm (4.48in)
	EXHD	70 x 53mm (2.7 x 2in)
<b>EXHD film roll</b>	Mylar film 80 mm (3.1 in) wide and 18 m (59 ft) length, 350 shifting steps, marks printed on the last 50 cm (19 in)	
<b>Electrical</b>		
Heater	24VAC 20W	Ton 10 ± 4°C (50°F) Toff 250 ± 3°C (77°F)
Glass protection device	24VDC, 2W (EXHD)	
<b>Installable Devices</b>		
	Camera equipped with lens for max power of 20 W, input power supply max 24 V	
<b>Accessories</b>	EXHS000	Sunshield 640 mm for EXHC000
	EXS001	Sunshield 760 mm for housing with glass protection device EXHD001

## EX integral pan & tilt

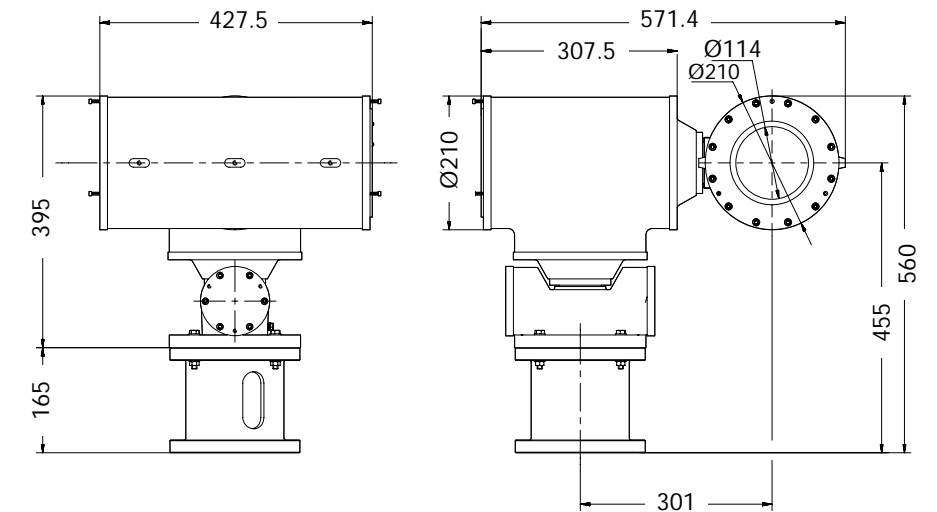
The above housings can be supplied integrated with a pan & tilt head - built to the same uncompromising standards - to provide a secure and versatile explosion-proof system. Potentially vulnerable external wiring has been eliminated by the use of an armoured multicore control cable which connects through the base of the unit. Designated EXPT or EXPTD depending on the housing type, a range of options are available.

<b>Operational angles/speed</b>	Pan	0-360°, 6"/sec
	Tilt	±90°, 2.4"/sec
<b>Torque (kgm)</b>	Pan	2.5
	Tilt	6
<b>Limit switch adjustable/preset</b>	Pan/Tilt	
<b>Cable gland</b>	1 x 3/8" GAS at the base of the P&T	
<b>Armoured cable</b>	1 x 7.5m (24ft) length: 25 poles 0.5mm, 4 poles 1mm, 2 RG174 of 75 W	
<b>Dimensions (ØxL)</b>	EXPTB/EXPTC	570 x 407 x 640mm (22.4 x 16 x 25.1in)
	EXPTD	580 x 575 x 580mm (22.8 x 22.6 x 22.8in)
<b>Power supply</b>	24 VAC 50/60Hz	
<b>Motor consumption</b>	Horizontal/Vertical 50W	
<b>Preset potentiometers</b>	Standard Horizontal and Vertical	
<b>Reinforced heater and P&amp;T heater</b>	Three resistors in the housing and two resistors, one for each motor, in the P&T	

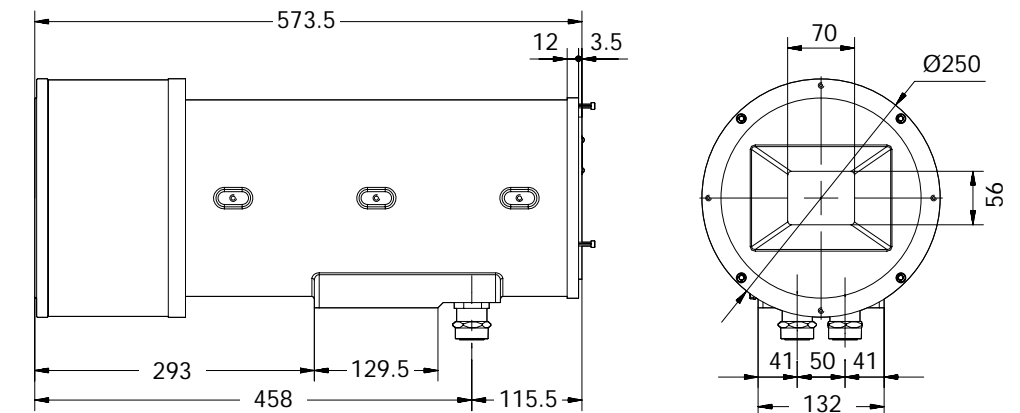
EXHC housing



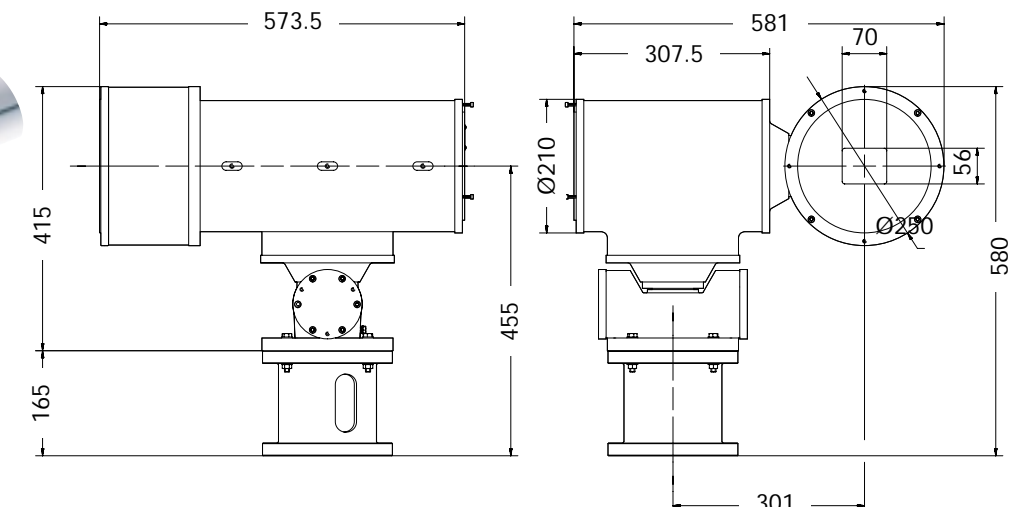
EXPT integrated pan & tilt/housing



EXHD housing



EXPTD integrated pan & tilt/housing



Note: all the above housings are shown fitted with optional sunshield EXHS

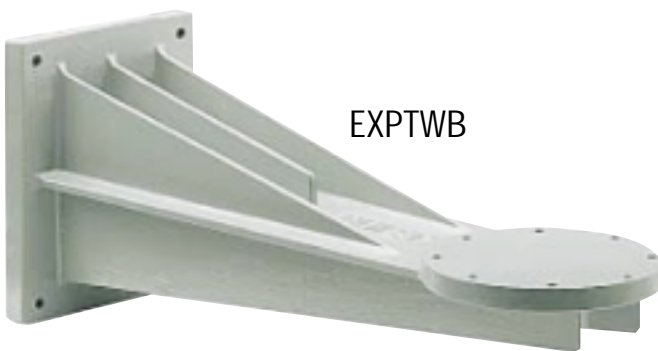
Dimensions in mm

## bracketry

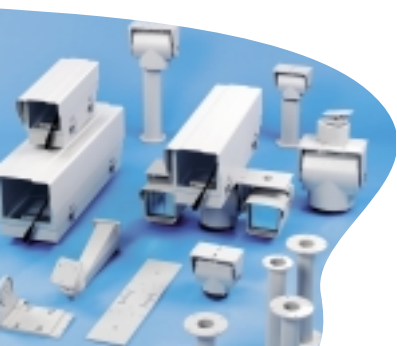
Brackets are made from solid anticorrosional aluminium alloy with a baked enamel finish, colour RAL7032.



Wall bracket and swivel mount for EXH series explosion-proof housings. The swivel can be used separately for mounting on top of a column.



Wall bracket for EXPT series integrated pan & tilt/housing. Supports up to 100kg non-static weight.



Metham Aviation Design Limited  
Station Approach, Four Marks, Alton  
Hampshire GU34 5HN, UK

Tel: +44 (0)1420 565618 Fax: +44 (0)1420 565628  
Email: [info@madcctv.com](mailto:info@madcctv.com) Web: [www.madcctv.com](http://www.madcctv.com)

MAD pursues a policy of continuous development. Specifications may therefore be changed without notice.

