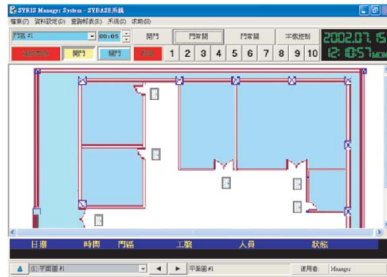




# SINGLE DOOR AND MUTI - DOOR SMART CONTROL SYSTEM



**SY120SA**



**SYBASE**

## SYBASE Management System

- Support Window 95/ 98/ ME/ NT/ 2000/ XP.
- Max 2000 card holder.
- Link up to 999 controllers, 999 doors.
- User define language.
- User can amend software system character and subject.
- Support electric map and forth with show door state and alarm data.
- Database support ACCESS/ MS SQL/ MySQL ... etc.
- Can support group of computers control entry and exit and inquire data.

## SY120SA SPECIFICATION

- Maximum 2000 card holders.
- In and Out data memory max to 2000 Records.
- Support with the alarm system with various function.
- Enter function : card / card + PIN / PIN.
- Already Built-in one reader, control in & out single-handed.
- Can install with SYBASE software system for group management.
- SMT technology, Constant quality.
- Extendable DIDO Module.

# SPECIFICATION

Items / Specs	SY120SA
Number of cards / records	2,000 / 2,000
Number of readers	built - in SYRIS reader ( EM compatible ) , external one SYRIS Wiegand reader
User P.I.N code	4 digital
Controller ID	001 to 999
Expand Module	Support MD120EXT-1S DIDO Module ( DI × 2 , DO × 1 )
Input Point / Control output	4 / 2 ( one relay , one voltage ) ( Expand 2 / 1 )
Timer / Group	1 / 4
Holidays	30
Frequency	125KHz
Card ( Transponder )	SYRIS card ( EM compatible )
Card read time	0.1 sec ( typical )
Read range*	5cm ~ 18cm
Indicator / Keypad / Back light	4 LED / 17 key / Green LED
Tamper switch	Built - in
Communication ports	RS485, 1 Ports ( optional RS232 × 1 )
Communication baud rate	19,200bps ( 4,800 · 9,600 · 19,200 · 38,400 · 57,600 · 115,200 )
Color	Beige or Gray
Weather Proof	Yes
Humidity	10 % to 95 % ( Non - condensing )
Operating temperature	-20 °C to 70 °C
Storage temperature	-30 °C to 80 °C
Power supply input	8V to 15V DC
Dimensions ( mm )	83 W × 121 H × 29.5D

\*This specification is preliminary and subject to change without prior notice.