

EPR 100

Harddisk reader for EDSR series' digital video recorders



Specifications

Supported products

DVR models: 100 / 400 / 600 / 900 / 1600 DVR

Multiplexer models: 4BDX, 4CDX, 8CDX
(with EDSR 100, EDSR 100 H, EDSR 100 M)

Front panel

Lights: 2 LED for power and disk activity indication

Lock: HDD tray lock

Rear panel

Power switch: Power on/off

Interface connector: USB type B connector

Power connector: 6-pin 5 V / 12 V DC

Software functions

Operations: similar to EDSR, mouse-controlled GUI

Search functions: via segment, alarm list, date/time and sidebar to move video pointer

Archive:

save still image to BMP or JPEG file

print still image

capture video to AVI file or archive to proprietary format file

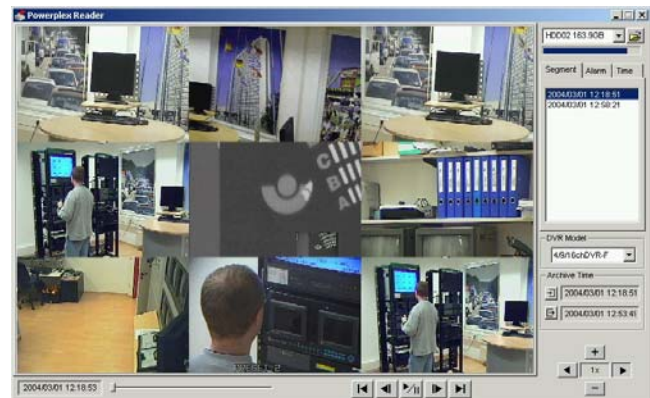
capture meta-data to text or binary file

Power max.: 100 ~ 240 V AC, 50 / 60 Hz, 30 W

Operating temperature: 0°C ~ +50°C

Dimensions: 155 (W) x 47 (H) x 277 (D) mm

Weight: 1,35 kg



System requirements

CPU: Intel® Pentium® III, 1 GHz processor (Pentium IV recommended)

Memory: 256 MB RAM (> 512 MB recommended)

Harddisk: 100 MB harddisk space;
additional harddisk space for video capture

USB: USB 2.0 port

Peripherals:

Windows-compatible display, min. resolution 1024 x 768

Windows-compatible mouse or pointing device

Windows-compatible sound card

Windows-compatible CD ROM drive

Operating system: Microsoft® Windows® 2000/XP™ with
Microsoft® DirectX™ version 9.0B or higher

Ordering information:

EPR 100 A: for EDSR 100 harddisks

EPR 100 C: for EDSR 100 M, EDSR 400 M,
EDSR 600, EDSR 900, EDSR 1600 harddisks